

**We Believe in Knowledge Creativity & Innovation**

**Educational, Industrial,  
Home Automation Products &  
Technical Training**



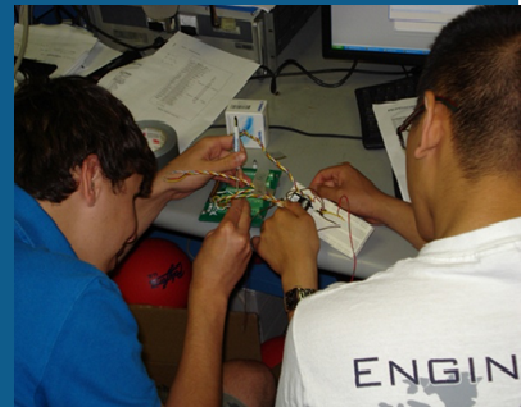
**Training**



**Products**



**Designing**



**Customized Solution**

Corporate Office:  
**Navigator Technologies**  
1,Unity Society, Near Surya Nagar ( Vaishali ),  
Behind New Kamla Nagar Thana, Kotra  
Sultanabad  
Bhopal- 462003 M.P India  
Ph.: 0755-4295241, 9826697394



## About Us

Navigator Technology is working in research & development of high class technical solutions for industries, educational training equipments, home automation, hobby kits, and display panels etc.

Established in Year 2010 with it 's corporate office in Bhopal and marketing and channel partners in different cities of the country

Our product range includes sophisticated VLSI, Embedded, Digital & Analog electronic educational laboratory and hobby kits, Home Automation Equipments, Industrial Automation, PIS/PAS system, customized training equipments, data loggers, data acquisition cards, LED Display panels, Electrical Panels, Automation circuits etc.

Navigator Technology remain as a successful navigator for young dynamic technocrats so that a strong technical front line could be developed for the technological advancement of the country.



### **Customized gadgets and equipments for technical military engineering college**

From basic robots to drones and sophisticated communication equipment we design, develop and manufacture variety of products for Military Engineering College. Products include use of VLSI front end technology, FPGA/ CPLD, microcontroller, embedded system technology, mechanical/mechatronics products etc. We had worked with MCTE MHOW M.P. India and feel pride in being a part of their AI ( Artificial Intelligence ) & Robotics LAB. Assisted few of their research projects related with SDR ( Software Defined Radio ), LASER voice and data multiplexed communication, 802.11 protocol simulator, VLSI front end based surveillance robot car. Signal Synthesizer and many more...

---



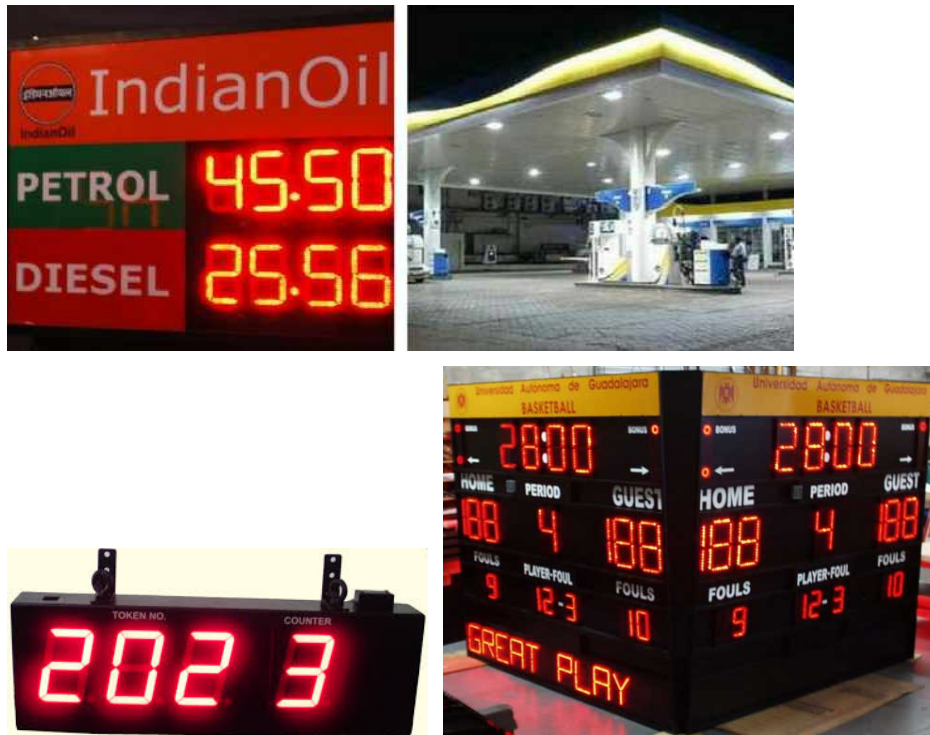
### **Escalator Data Logger**

Serving reputed firms like DaultRam Engineering Services Pvt. Ltd. In their ambitious escalator project and designed developed and installed an Escalator Data Logger Device. This device is a unit that stores the logs of escalator working, breakdown, direction information along with SMS intimation feature to given numbers. Further the same data logger device is accompanied with a software to view the stored logs that is also developed by Navigator to fulfil the at most need of Railway' s RDSO Escalator LOG format. This data logger device has a firmware that can be upgraded to maintain the logs over cloud and can be transferred to a server using GPRS network.

---







**LED Information Boards**

We are assembler and manufacturer of LED information boards with a wide variety of usage in market. We assemble regular P10, P6, P8 led modules single and multicolour RGB boards for use in market. Apart from the regular display boards we also manufacture customized control cards for LED boards ( P10/P6/P8 modules ). We serve customer such as

- Advertisement and content information display
- Product Rate Display
- Industrial Information boards/ Production Display boards
- Token Display boards
- Sports Score Boards

We manufacture boards in this category with a wide versatile variety of source supply. These boards are accompanied with customized source input that can be driven through AC mains voltage/ DC battery voltage/ Solar Panel or any other source supply as per the customer demand. Further the data input for the message can be on the other hand full of choices like regular USB flash, Wi-Fi Flash, customized and regular flash of message from Computer software, Android Application flash, flashing messages through short messaging services ( SMS ). Over the web flash services and many more as per need and requirement of customer. For the purpose we use the regular readymade led control cards and develop and manufacture the same for customization options.

---



## TOILET FEEDBACK SYSTEM

Smart Toilet System provides a convenient tool for monitoring toilet cleanliness and improving toilet service. This interactive touch feedback system enables visitor to rate their experience and submit a service request for poor and bad services. The feedback devices installed in the toilets is a kind of interactive machine with three buttons that can be used to indicate their opinion of the cleanliness of the toilets – red for dissatisfaction, green to express satisfaction and orange to register an average option.

Each feedback device is fitted with GPRS modem and a data SIM for back-end connectivity to the server. The performance index will be measured on an online dashboard and the urban local body will send an SMS to the caretaker for corrective action if the feedback is bad. An escalation SMS to higher management levels can be sent if feedback does not improve.



## Sanitary PAD Vending Machine

In a supporting hand to Women empowerment and cleanliness we are developing vending machine for Sanitary pad dispensing. This machine is available on order with customized option for one, or more than one row for holding the sanitary pads, that can be dispensed on insertion of decided coin. Coin sensor is a ready to configure module with easy option to intake various types of coins as per need. We offer customized rotation and sensor based dispensing channel. LCD screen for customer interaction and maintenance interaction is provided at front in variable sizes and shape. Dispensing channel can be designed in various shape and size for various sanitary pad products.



### Passenger Information System/ Passenger Announcement System (PIS PAS)

The ITS ( Intelligent Transportation Standards ) promotes display systems to be installed inside the transportation vehicles for information displays well as intelligent announcers are also a part of it. This includes the information of Source & Destination, Stop name and stop announcements before and after the stop as well as the time to time announcements for source destination. Further this system can be accompanied with a control unit that will have the capability to hold a number of information to be announced and displayed on the PIS/PAS installed and that too with an option of selection of different routes. The same system can be used to broadcast customized adverts time to time. Navigator also deals in stop display boards and GPS tracking solutions for system. Such a PIS/PAS system can have the following category of product line

Front Destination Display Board

Rear Destination Display Board

Inside Bus Stop Detail Display Board

Announcement System

Auto GPS based stop announcer

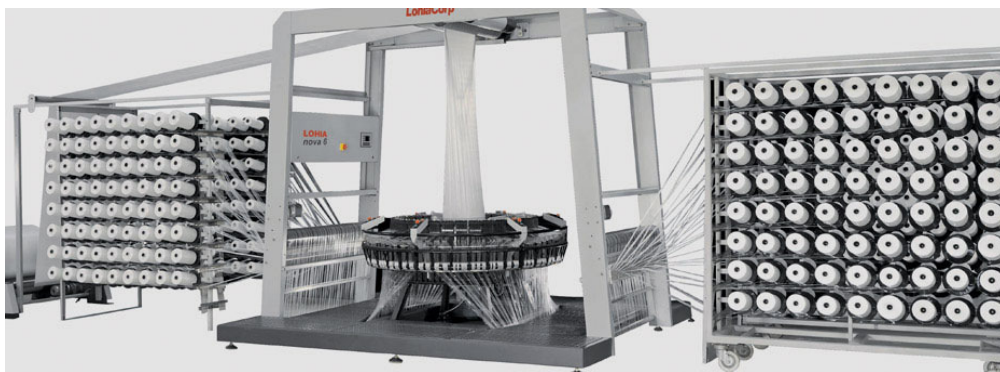
Control Unit/GPS/GPS Antenna and other accessories

Stop Display boards for ETA ( Estimated Time Arrival ) Display

We here at Navigator; design/develop/manufacture and assemble such products as per the customer need and requirement. We also serve the transportation industry for service and maintenance of already installed system. We are proud to be a partner in the channel for serving public transportation in various cities of the country.



### **Industrial Data Loggers/ Data Acquisition Cards & Devices**

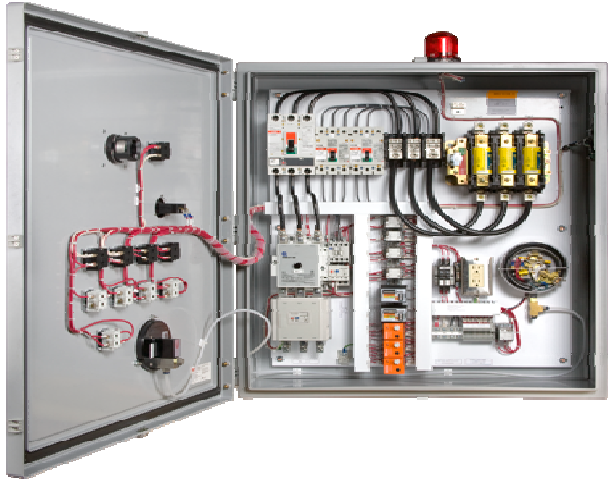


Automated/Semi automated/manual industrial machineries needs continuous monitoring and logging for analytical purpose that not only describes the current working but also the necessary plan of action for efficient outcome of the industries. Navigator Design/Develop/ manufacture customized and regular Data loggers for existing machines and scenario in industries. This data logger equipment is designed with industry standard component with best quality and grades raw material. We provide a wide variety of options for data logging communication like wired/wireless/GSM/GPRS/Bluetooth etc.

In this category we had served certain Woven sacks & similar production industries with not only the hardware equipment but also with customized software with a number of features and options to use in a complete process cycle.

---

### Motor Pump Control Panels/ Electric Control Panels/ Street Light timers

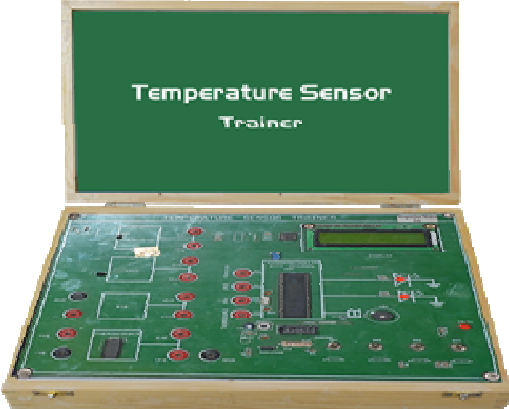


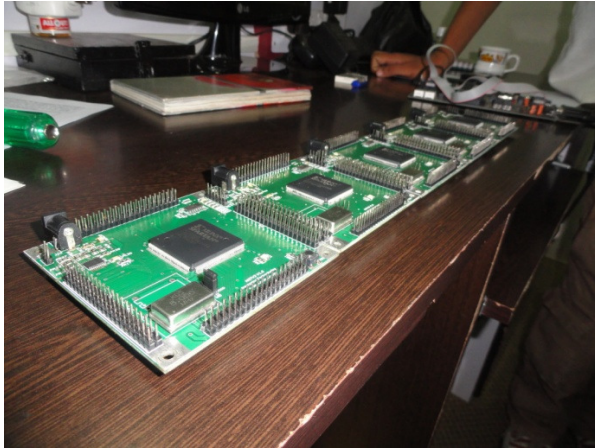
This category of product includes electric control panels for operation of various heavy electrical loads through manual/automated process. Navigator design/develop/manufacture/install automation panels for sewage treatment units, street light timer/controllers, industrial machineries etc. With a wide customization option for control options in panels we assemble and install the panels at customer sites and provide the services for the same.

We had served certain clients and city corporations with such products in various cities of the country.

---

Trainer Kits/ Laboratory Equipments/ Research Lab Instruments and machines





Control system lab



39

Electronic trainer



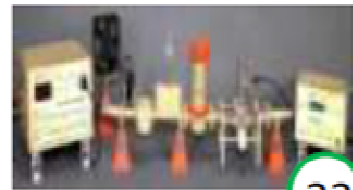
38

HDTV Trainer



47

Microwave Test bench



22

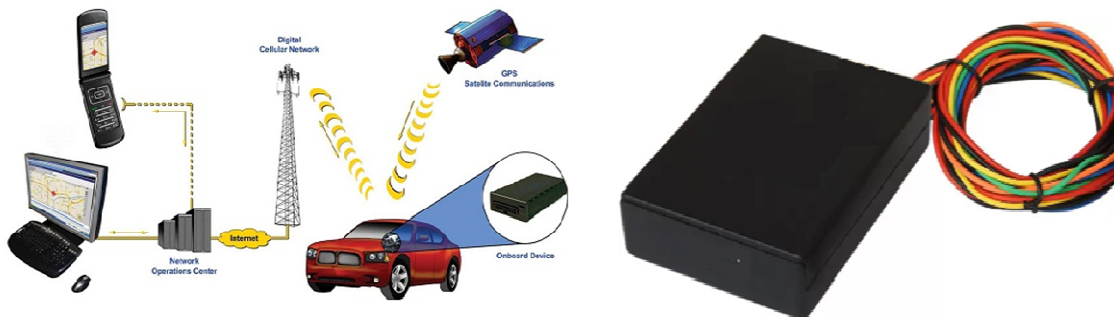
PLC training console - Delta






30

This category of product is the base line product of Navigator and we design develop manufacture a number of trainer kits/ boards/ research equipment/ lab machines/ trainer kit panels, modules for various technical institutes and Research labs throughout the country. We deals in technologies like VLSI, Embedded System, PLC SCADA for Electronics and Electrical Lab category products. With our channel & technical partners we also deals in mechanical lab equipments and assist them in their product line with electronic counter part of the heavy mechanical assemblies.

## GPS Tracker Device



Personal Vehicle 2 & 4 Wheeler / School-College Bus/ VAN/ Transporter/ Fleet Management/ Person Tracking etc.

 <b>INBUILT MEMORY</b>	 <b>DEVICE TAMPER ALERT</b>	 <b>INBUILT ANTENNA</b>
 <b>WATER &amp; DUST PROOF CABINET</b>	 <b>OTA FIRMWARE UPGRADE</b>	 <b>GLONASS</b>

### Features

- Powered by Cortex Processor
- High Sensitivity GPS Receiver
- TCP/IP Communication
- OTA firmware Upgrade
- User Password management
- Remote Configuration Via Mobile
- Inbuilt GPS & GPRS antenna
- Internal memory for non GPRS area
- Virtual Odometer
- LED indication
- Shock proof ABS Cabinet
- Live Tracking
- High Speed Alert
- Inbuilt battery backup 4 hours
- Ignition Sense Input
- Remote Vehicle immobilisation
- Mains cut-off alert
- AC on/off alert ( optional )
- Fuel monitoring (optional)

Where to use a GPS tracker is a personal choice we manufacture and support regular and customized GPS tracking solutions as per the need and requirement. Portal for GPS tracking with regular and customized feature is an integral part of our product line in this category.



## Water Tank Automation ( जल उर्जा संचय )

Hotel/Hostel/School/Home/  
Hospital/Building/Industries/  
Plants/Society etc



It's a device manufactured to sense water in overhead/under head tanks ,municipal tap connection etc and automatically turn on and off the motor attached to it so that

Wastage of overflowing water can be stopped

Usage of electricity as per need only

Saving of manpower by automatic operation of the machine and providing comfort to the elderly in the house.

**One of the initial device from product line of Navigator's line card and a must device for all house !!!**

## Pump Timers/Street Light Timers/Bell Timer GSM/GPRS/Fix/Key Type

It's a device manufactured to turn on and off the motor/street light/bell/ hooter etc attached to it at specified timings that can be stored manually or remotely into the device even the device attached can be turned on or off via SMS or GPRS communication from anywhere remotely. Saving of manpower by automatic operation of the machine and providing accuracy of timed operation is the key benefit of this device. Available in various variants this product is also available in customized options as per need and requirement from the customer. Output of the device is potential free and can be connected to any switching circuit



already available. The switching panels or devices can also be incorporated as per need and requirement of the customer. Further this devices GSM based version ha feedback option to intimate the status of the attached device via SMS/GPRS. Cloud based IoT operation can also be configured in some of the versions of this device.

**This is also one of the initial device from product line of Navigator's line card !!!**



## **Shutter/Door Siren/ Alert System**

**Shutter/Door Siren or Alert System is a product manufactured to provide a add on security solution to your valuable lockups. It can be used/ mounted on your Shop/Showroom/ Go down/ Warehouse shutters or entry gates. With a secured key the product provide you a automatic siren/alert on unauthorized access. After lockdown if any body opens the shutter or gate the product starts a sharp and loud sound after 30 seconds of triggering. Siren can be turned off on authorized access before it triggers using authorized key.**

**One of the siren model comes with call alert using GSM technology. On unauthorized access the machine can send call to the stored numbers/ numbers.**

**We Believe in Knowledge Creativity & Innovation**



## **Led Emergency Lamp ( AC/DC LED Bulb)**

**When the Inverter LED Light is Switched ON ( when power/electricity is available), it will give a 100% light output.**

**When the main supply is cut-off and switch is still ON, Inverter LED Light will continue to glow at lumen level which will be lower by 40-50%.**

**The battery inside the bulb will automatically charge in ON mode when power/electricity is available.**

**Operating Voltage 90-285V AC**

**Colour Temperature 6500K/3000K/4000K**

**Full Charging Time 8-10 Hours**

**Backup Time 3-4 Hours Maximum**

**Battery type Lithium -Ion**

**Warranty 6 months full replacement**

## **Customized Design Services & Training**



At Navigator Technology we design and develop customized products based on Electronic accessories for other companies. Our services in this category includes circuit designing, PCB designing, programming & any sort of electronic product designing to be sold and maintained under the brand name of customer company. We feel proud to guide & train young and intellectual technical graduates and post graduates to groom in their respective fields and withstand the technical requirement of skilled manpower. We provide certificate training courses in following categories

VLSI Front End Design

Embedded System Design

Circuit & PCB Design

PLC & SCADA for industrial automation

Certificate courses on software like MATLAB/ LABView etc

---



**Our Associates and esteemed clients**

**Nebula Equipment Pvt Ltd**

**Technido Indore**

**Durend Controls Pvt Ltd**

**ANPG Traffic Light Solutions**

**RPS Solar Solutions**

**Industries/Companies:**

Daulatram Engineering Services Pvt Ltd

Flexi Tuff International

Aaradhya Disposal Dewas

Dewas Metal Sections

Texas Instruments

Rico Auto Industries

Infosys

Honeywell and More..

**Engineering/Polytechnic/ITI Colleges:**

MANIT, GWP Bhopal, SV Polytechnic Bhopal

MITM, NRI Group of Institutes

Military college of TE, Acropolis Int of Tech

Bansal Group Engg College

SD Bansal Int of Tech , Sagar Group of institutes

Patel Group, JIT Borawan

MIT, IIT Bombay

IIT Guwahatti , IET-DAVV

NIT Raipur, CITM, TRUBA

**Schools:**

Assam Valley School

Mayo College, Ajmer

Scindia School

Birla Vidya Mandir

Adani School and More

---

**Research Labs:**

Indian Astrophysics Lab

RRCAT

National Physical Laboratory

DRDO and More